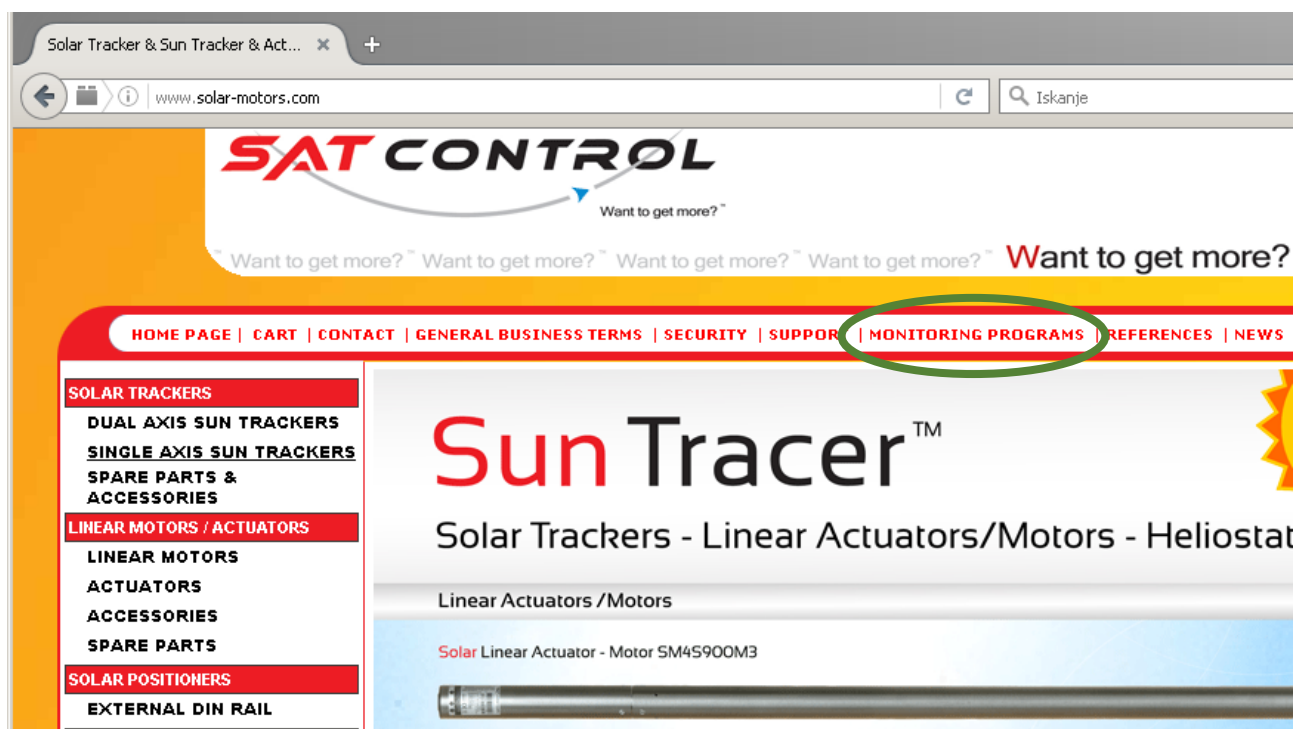


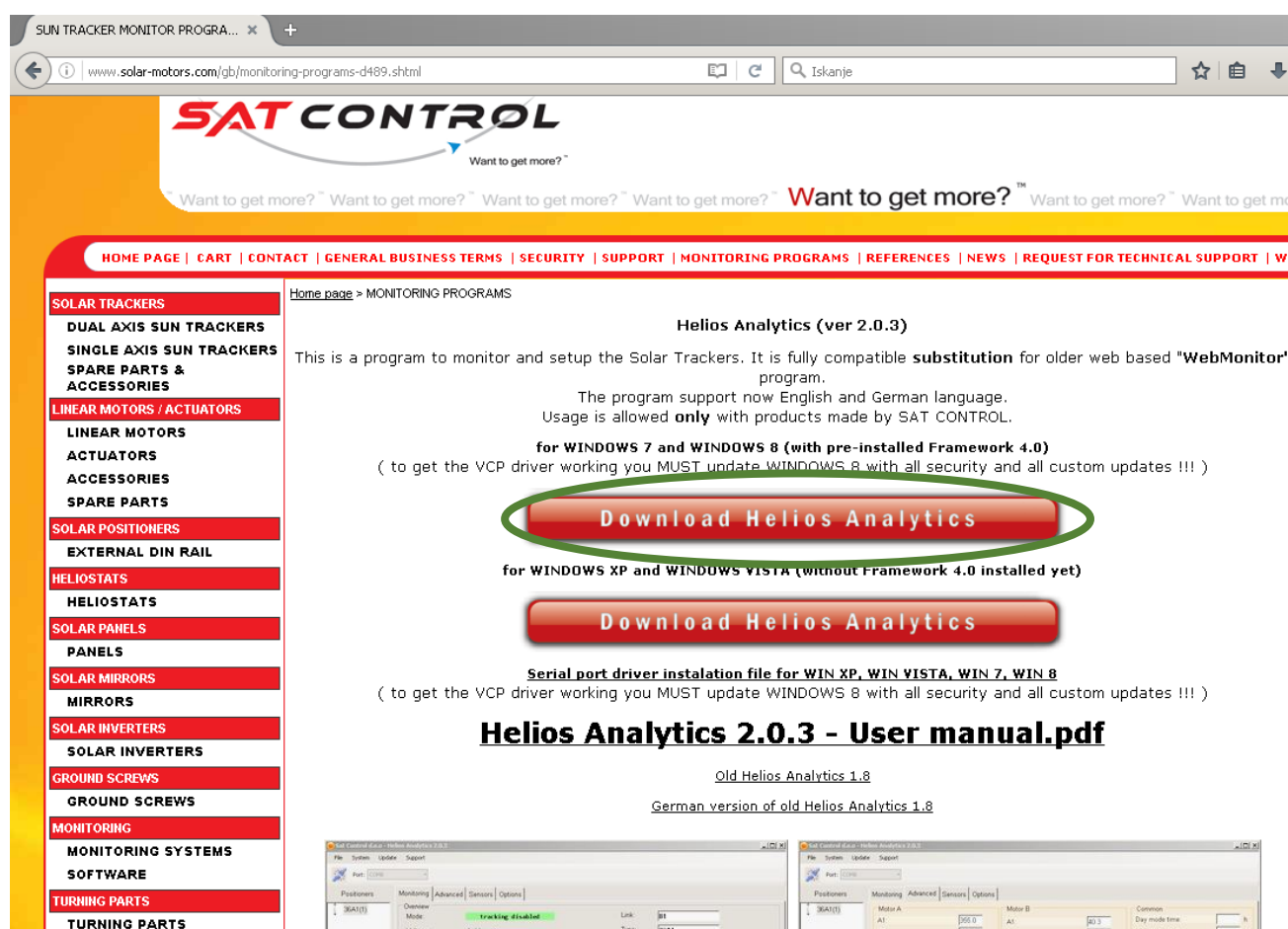
# HOW TO SETUP HELIOS ANALYTICS

## STEP-BY-STEP INSTRUCTIONS:

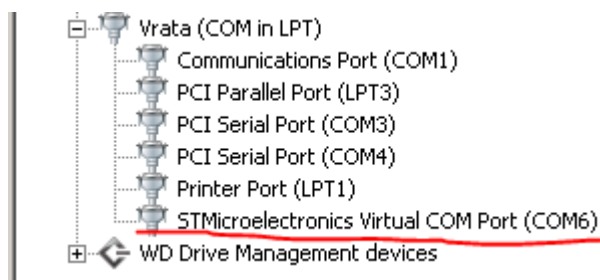
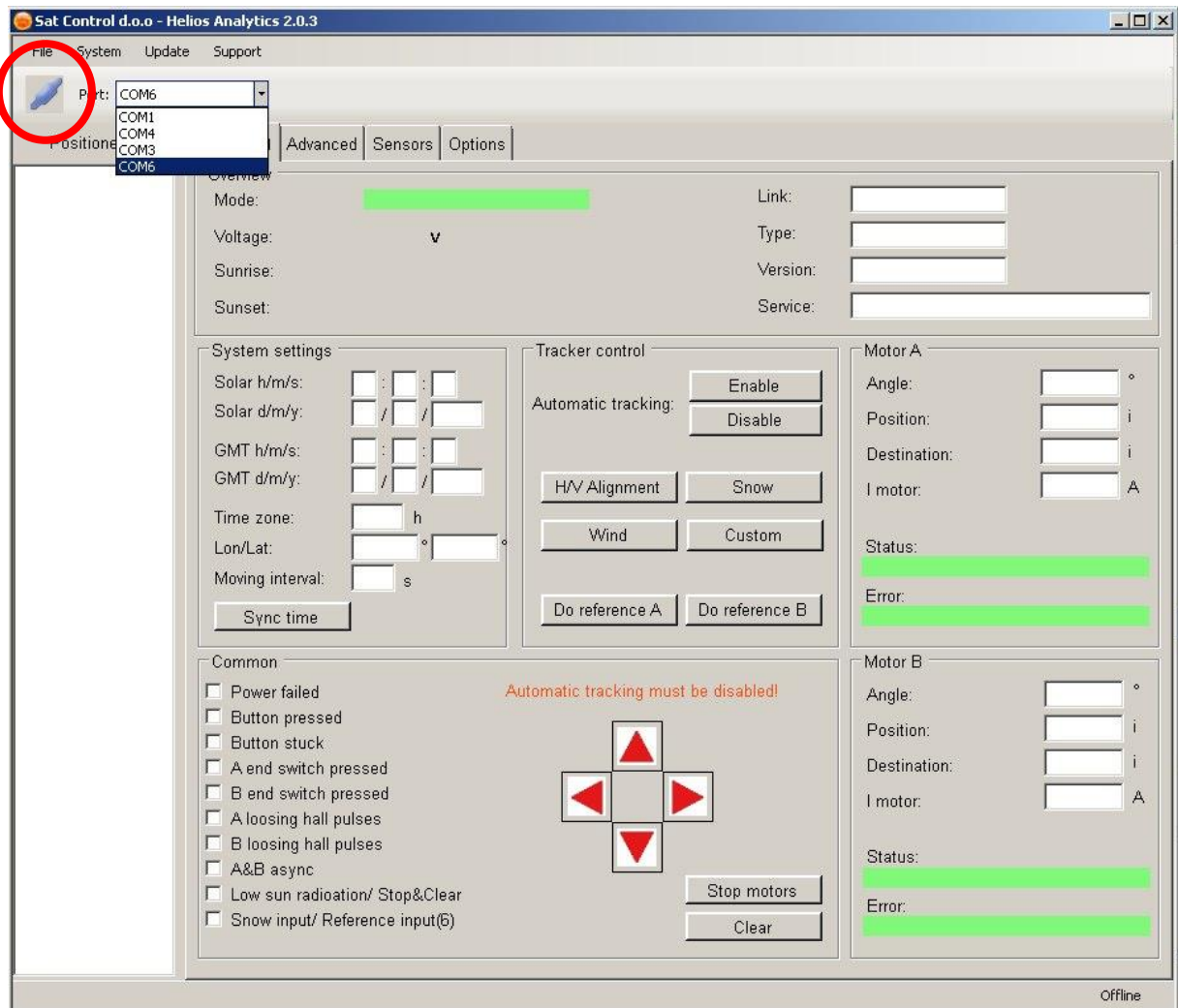
1. Download Helios analytics from [www.solar-motors.com](http://www.solar-motors.com) to C:\Users\USER\Downloads



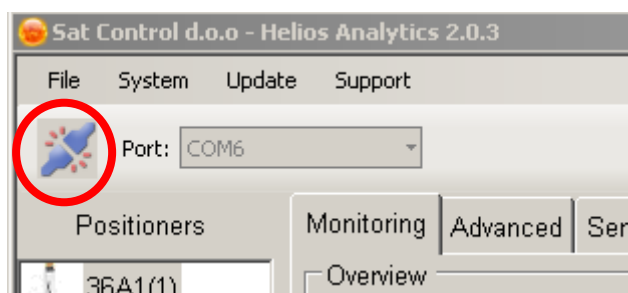
<http://www.solar-motors.com/gb/monitoring-programs-d489.shtml>



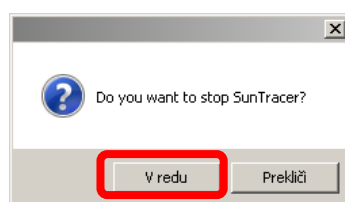
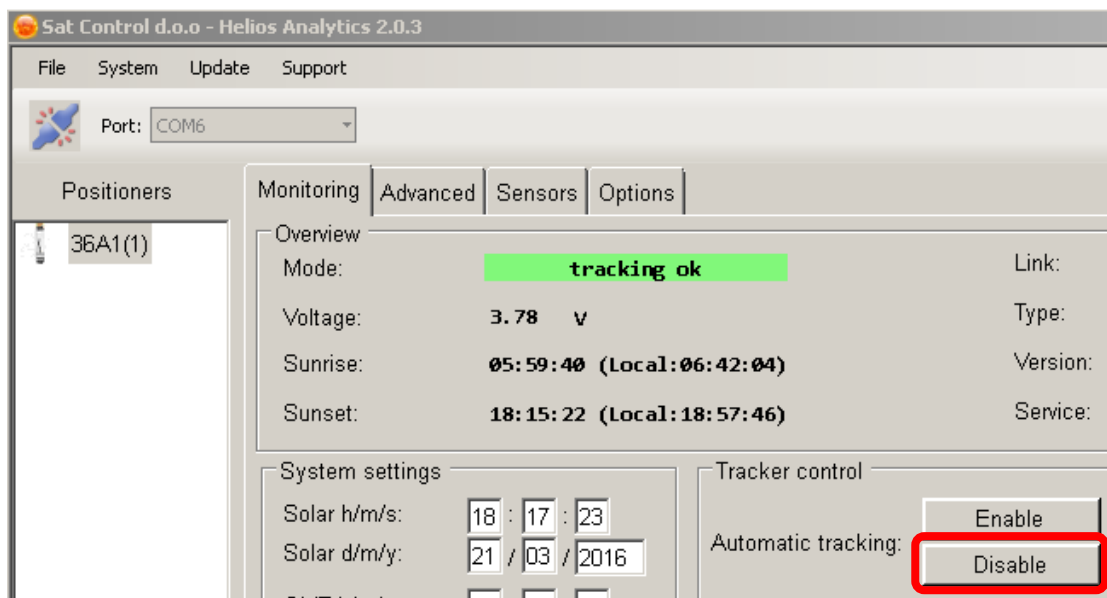
2. **Extract downloaded file to disk C:\Program Files (x86)\HELIOS**
3. **Run or open HeliosAnalytics.exe** from the folder where all other original files and folders are. If you want to run from desktop, make shortcut on desktop! Do not copy this file on desktop, because will not work!



4. **Choose right COM port.** You can check which COM port in ->START -> COMPUTER -> PROPERTIES -> DEVICE MANAGER -> PORTS COM & LPT -> check for STMicronics Virtual COM port (COMx) (x is a number). In our case, we choose COM6 and press connect. (the button left beside COM ports.

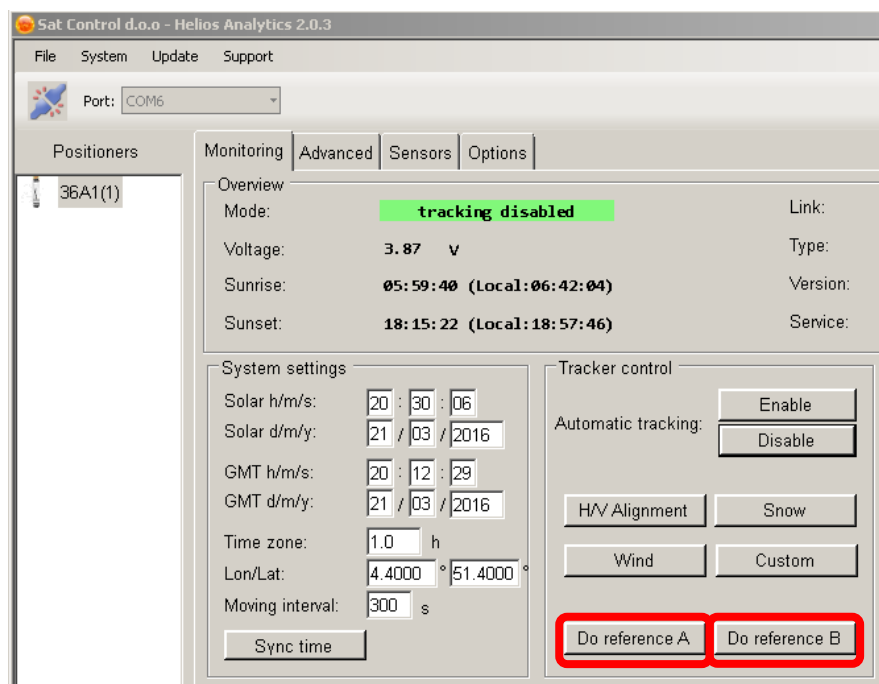


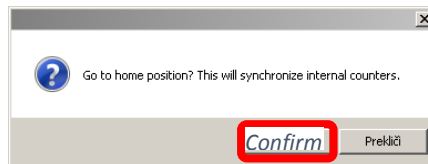
- The numbers appear and link is counting; **now disable tracking** in case tracking enabled.



- Click **“Do reference A”** and confirm action to initiate a position calibrating for motor A. When motor A stops, click **“Do reference B”** and confirm action to initiate a position calibrating for motor B.

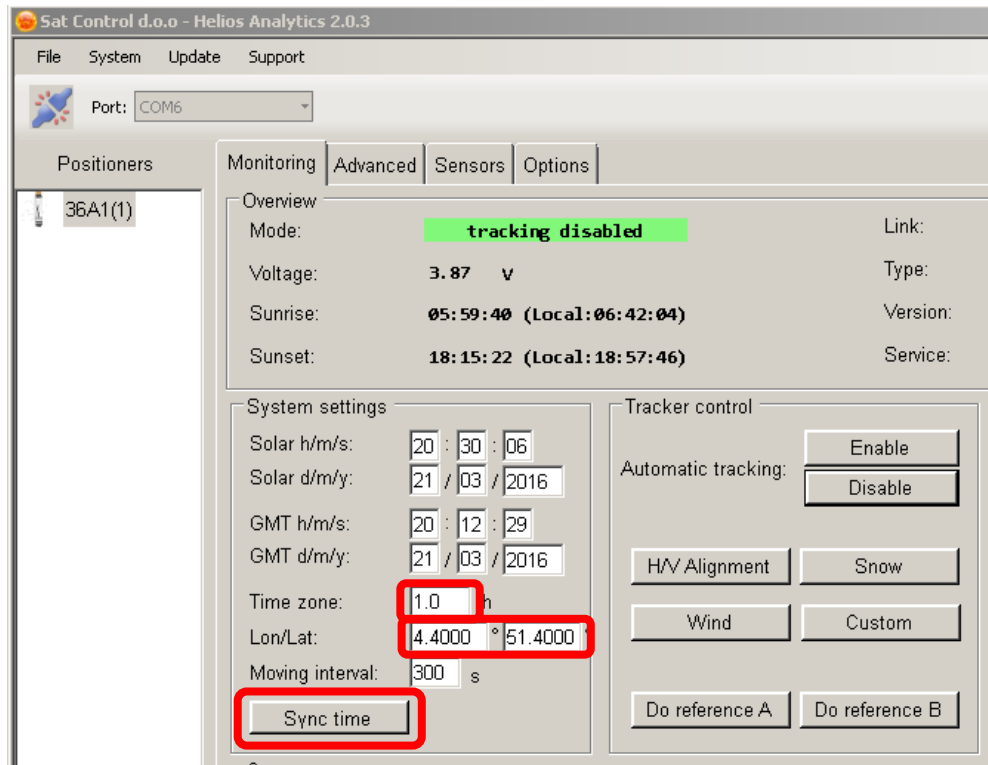
**WARNING:** Before proceeding to this step, make sure that all connectors are plugged in, all wires and screws are properly tied in junction box and on motor’s side! If not, all further actions can lead to serious damage of tracker! The power 24VDC must be on!



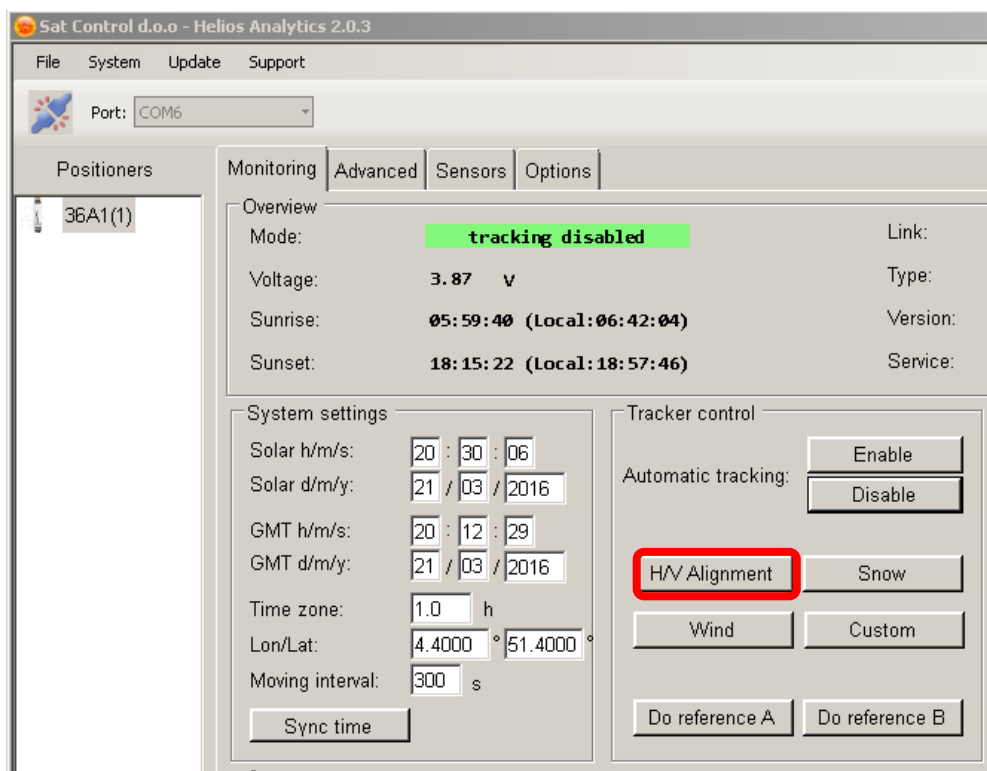


Click “Do reference A” and confirm action. When motor A stops, click “Do reference B”. You can proceed when motor stops moving and both positions are same as parameter “min range A” and “min range B” under tab Advanced parameters. Important Note: The motor fully retracts then goes to “min range A/B”. Check whether motor position is “0” (or “min range A/B” in case it is different from 0) when motor stops. In case it is not, please contact us. For additional information, refer to Helios Analytics manual.

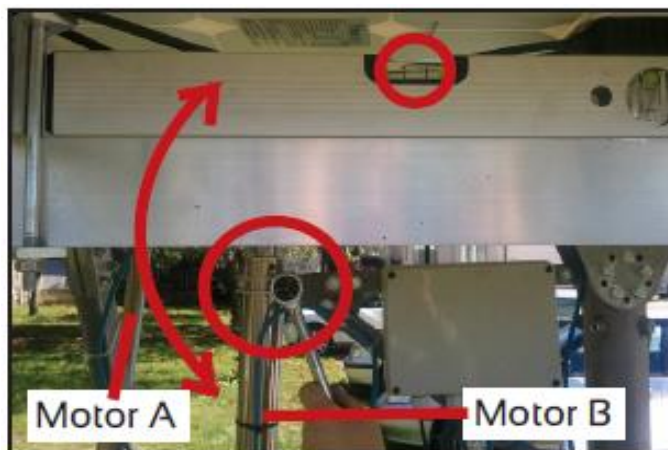
7. **Sync time, set Longitude and Latitude and time zone** of yours’s solar tracker position. (minus sign is WEST)



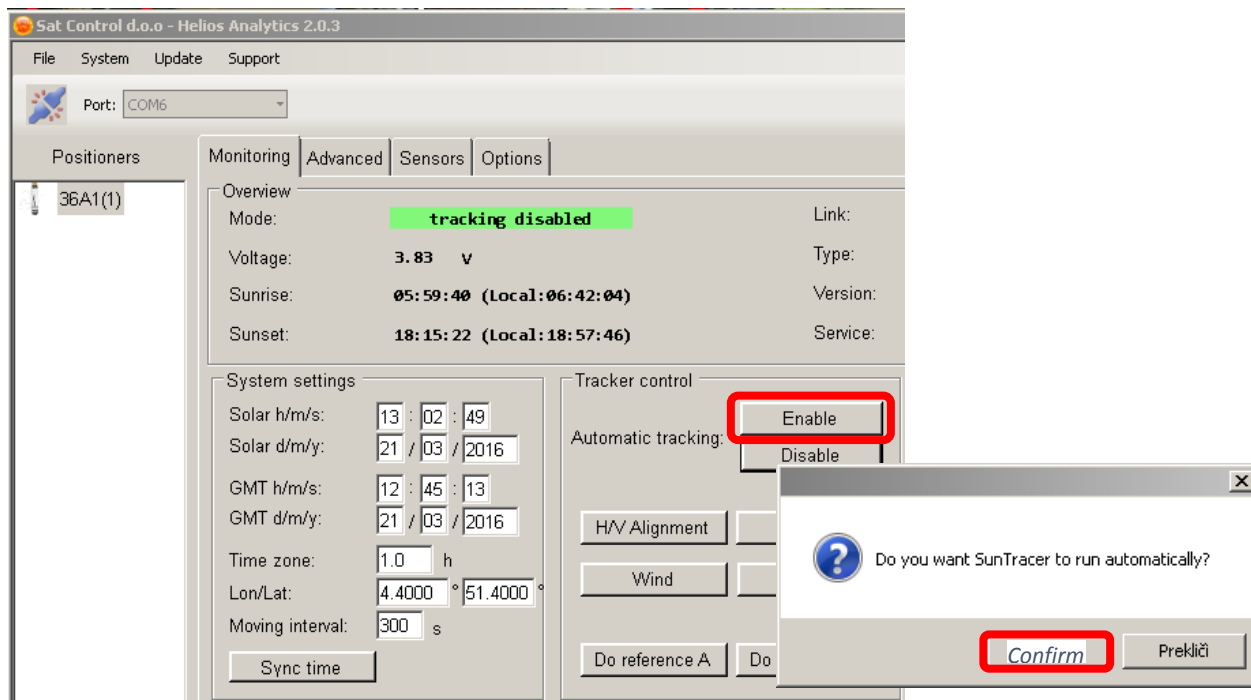
8. After the calibration is finished and motors stops, **press H/V alignment to initiate horizontal alignment.** After motors stops, make mechanical calibration so, that you loosen the clamp of stator part of linear motor; adjust plate with solar panels fully horizontally with help of spirit level, then tight clamp back. Do it so by both linear motors. **WARNING:** At the time of horizontal alignment, check if parameter Min. range A is zero and parameter Min. range B is zero in Advanced tab. When are not zero, then set it to zero (both).



See photos of horizontal aligning.



## 9. Enable tracking.



Start to use the Helios analytics and discover the advantages and benefits with help of user manual for Helios analytics.

