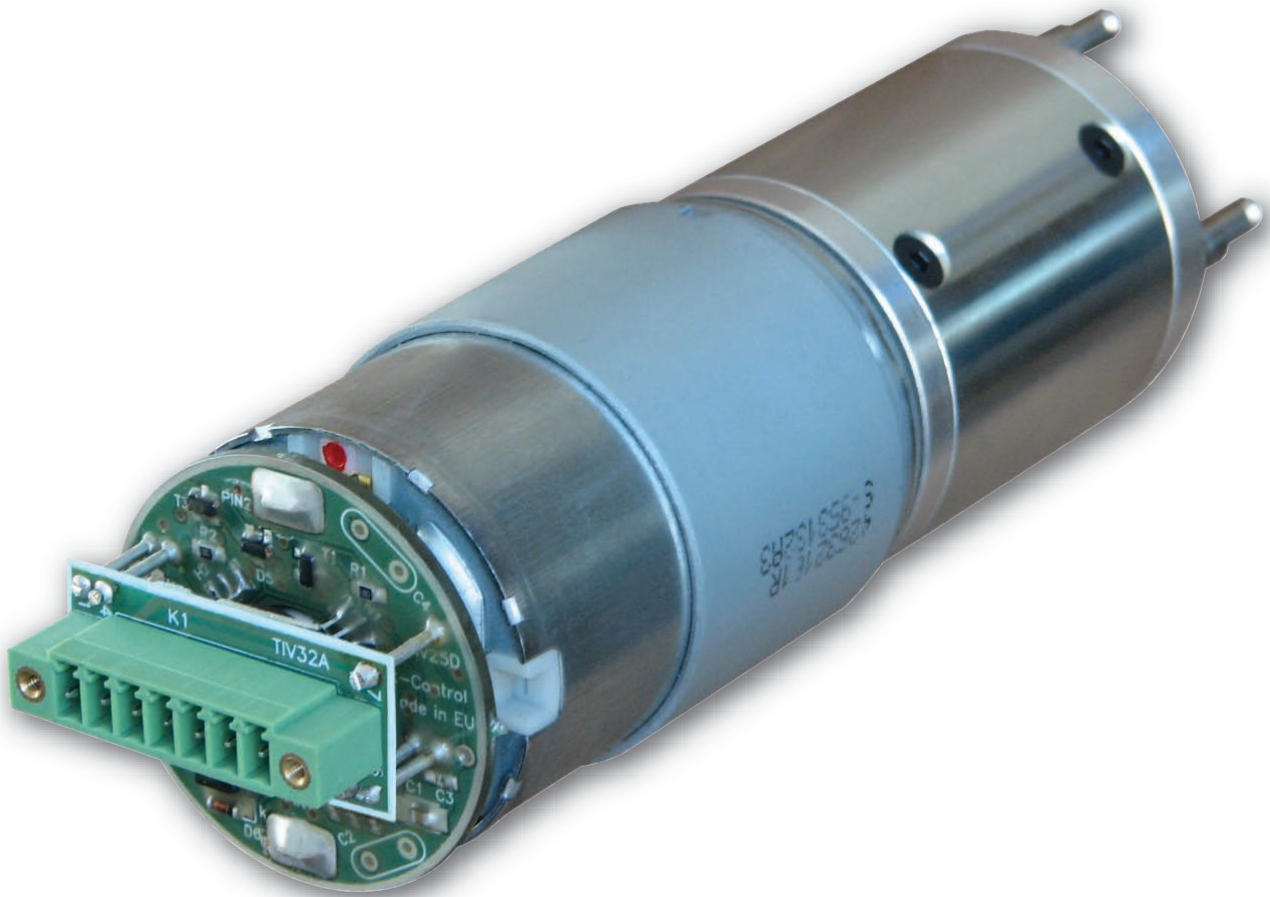


GEAR MOTOR ASSY

Gear motor assy IG42G-24V 1/294R with TIV25D and Connector
POGSKLSM4M3V3 / 383106395020



Gear Motor Assy IG42G-24V 1/294R with TIV25D and Connector

Product Description

Specifications

- Reduction Ratio: 1/294
- Output Shaft: Steel
- Motor Specification: 24V 10.500 rpm

Includes

- Gear Motor Assy IG42G-24V 1/294R
- Front connection board TIV 25D for GM for SM4M3
- Connector 7 pin. R=3.5 for screwed fast. green

SAT CONTROL
Want to get more?

www.solar-motors.com

GEAR MOTOR ASSY

Gear Motor Assy IG42G-24V 1/294R with TIV25D and Connector

Technical Capabilities

Operation

Rated Voltage	24 V D.C. - Stable Power Source
Rated Torque	30 kgf.cm - 10mm from shaft end
Radial Load	5kg-f
Axial Load	3kg-f
Turning Direction	Shaft horizontal
Reverse Direction	C.W. CCW
Using Enviroment	Temperature - 10-60 deg C, Humidity - 20-90% RH
Preserve	Temperature - 20-70 deg C
Using Voltage Range	24 V(D.C.) +/- 10%

Electrical Data

No Load Current	1.34 A Max.
No Load Speed	35 rpm +/- 15%
Rated Current	2.2A
Rated Speed	33 rpm +/- 15%
Stall Current	29 A
Insulation	D.C. 500V meg. 10m Ohm min. - Motor terminal shell
Durable Voltage	100V (A.C.)' 1 minute min.
Coil Resistance	10.9 Ohm - Reference
Torque Constant	30.89 kgf.cm/A - Reference
Voltage Constant	294.97 mV/r/min - Reference

Mechanical Capabilities

Reduction Ratio	1/294
Thrust Play Of Shaft	0.3mm max.
Radial Play Of Shaft	0.10mm max.
Back Lash	1.2 deegree max.
Outside Appearance	No scratch defective... - By visual judgment

Life Cycle

Life Cycle	108.000 cycles min After the rated life cycle test current @ rated load must stay within +/- 30% of the initial value and r.p.m. @ rated load must stay within +/- 20 % of the initial value. However change of the mechanical notice level was not considered as part of the testing.
------------	---

