

INSTRUCTIONS FOR INSTALLATION AND USE

ST40M2V2P - a single axis sun tracker



SAT CONTROL
Want to get more?

SunTracer is registered trademark of company Sat Control. All rights reserved. Copyright.

www.solar-motors.com



1 pcs M12 x 90mm



1 pcs M10 x 50mm



5 pcs M8 x 110mm



4 pcs M8 x 80mm



4 pcs M8 x 50mm



1 pcs



8 pcs M8 x 16mm



8 pcs M12 x 20mm



12 pcs M6 x 12mm



15 pcs M8



1 pcs M12



9 pcs M8



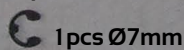
4 pcs M8 x 40mm



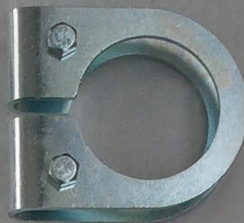
4 pcs M8 x 30mm



2 pcs M12



1 pcs Ø7mm



1 pcs



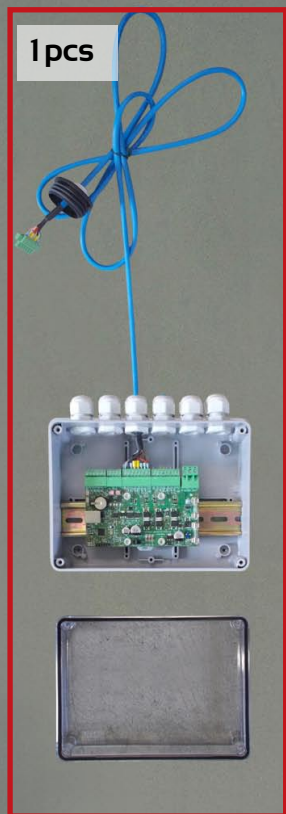
8 pcs



4 pcs



2 pcs

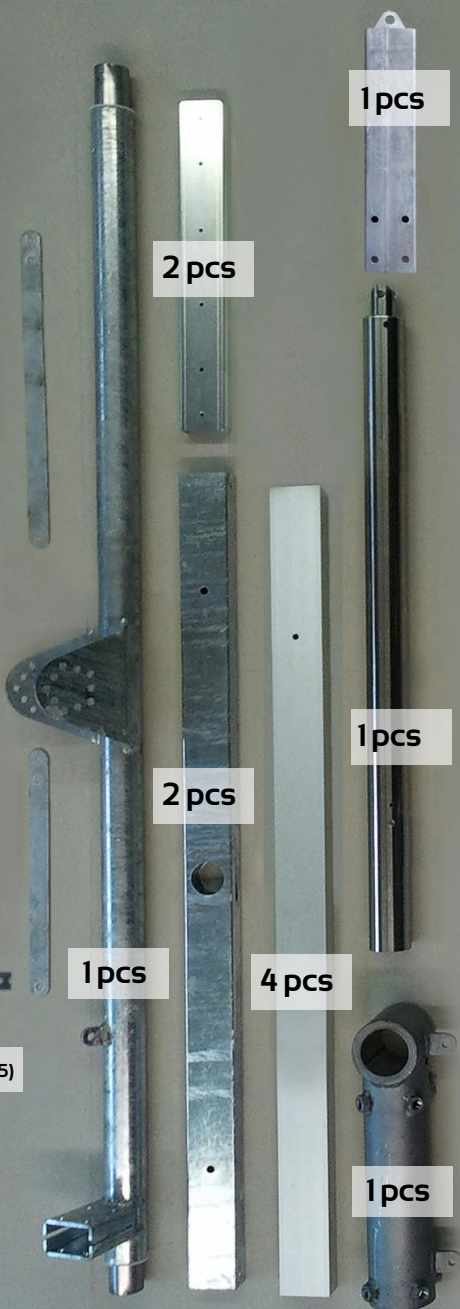


1 pcs

2 pcs

4 pcs (4,2 x 9,5)

5 pcs



2 pcs

1 pcs

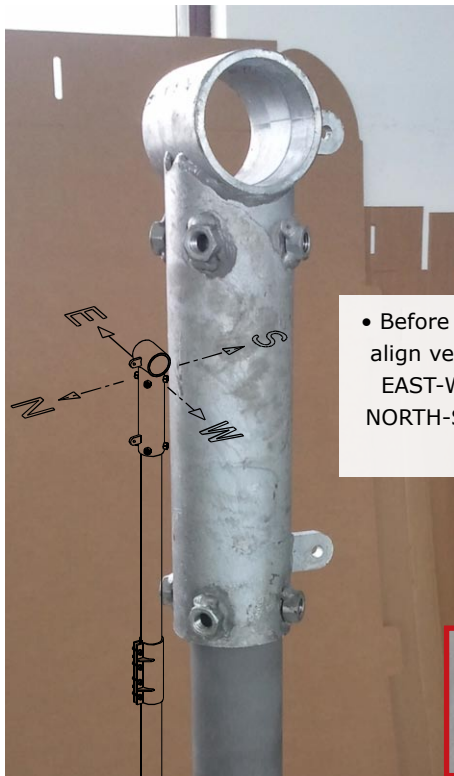
2 pcs

1 pcs

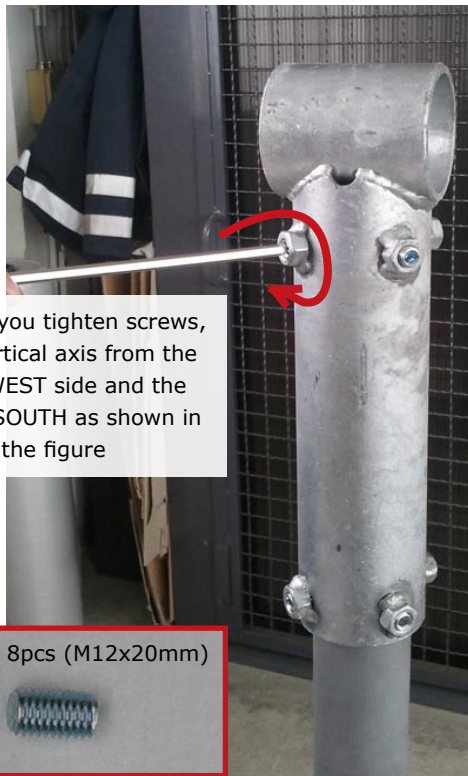
1 pcs

4 pcs

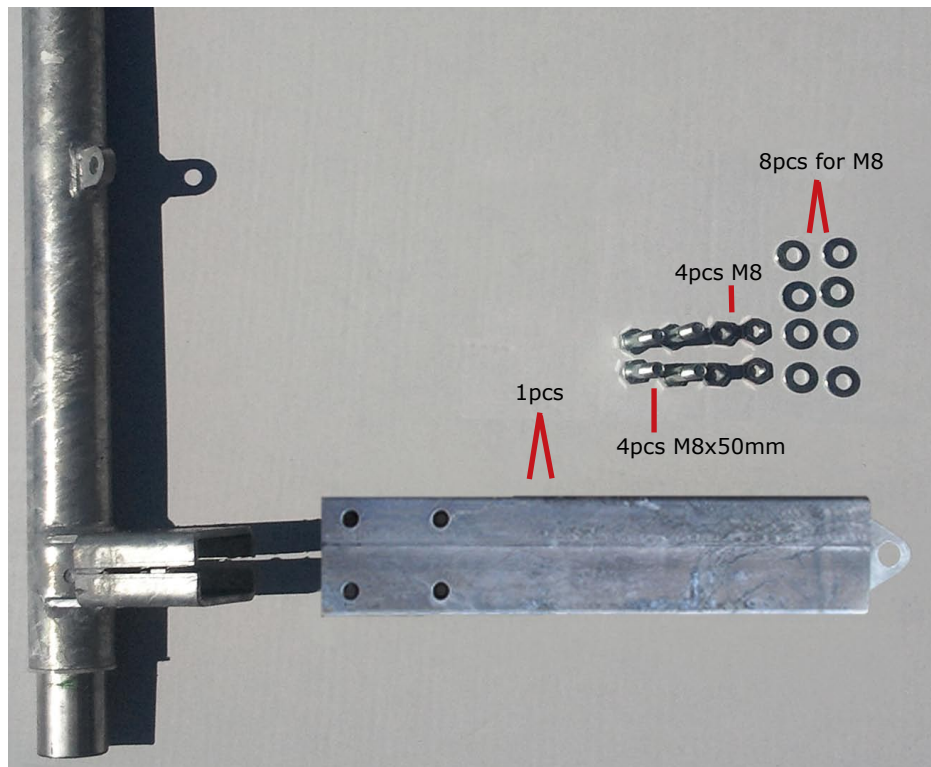
1 pcs

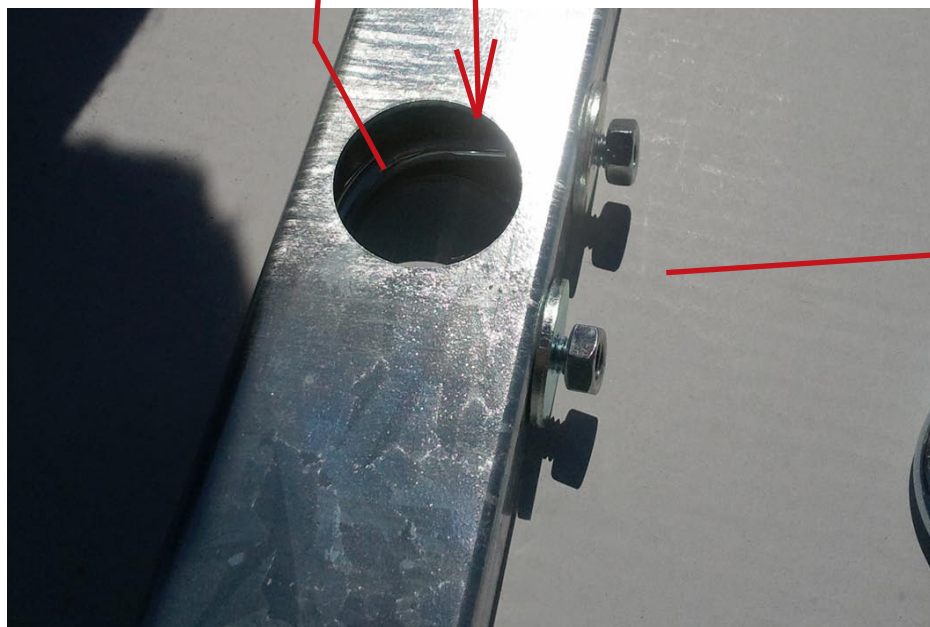
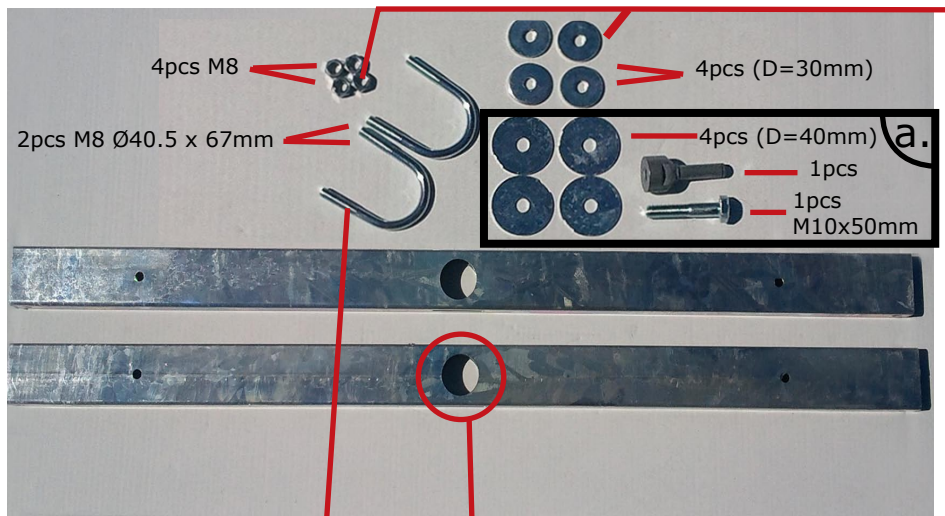


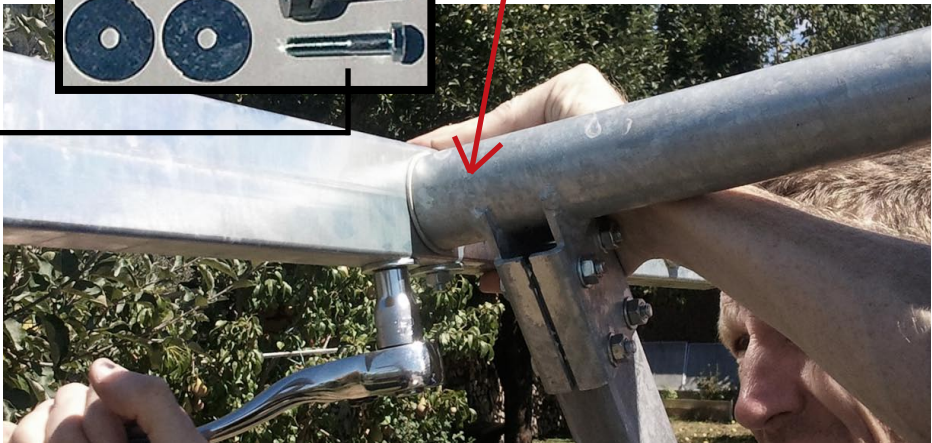
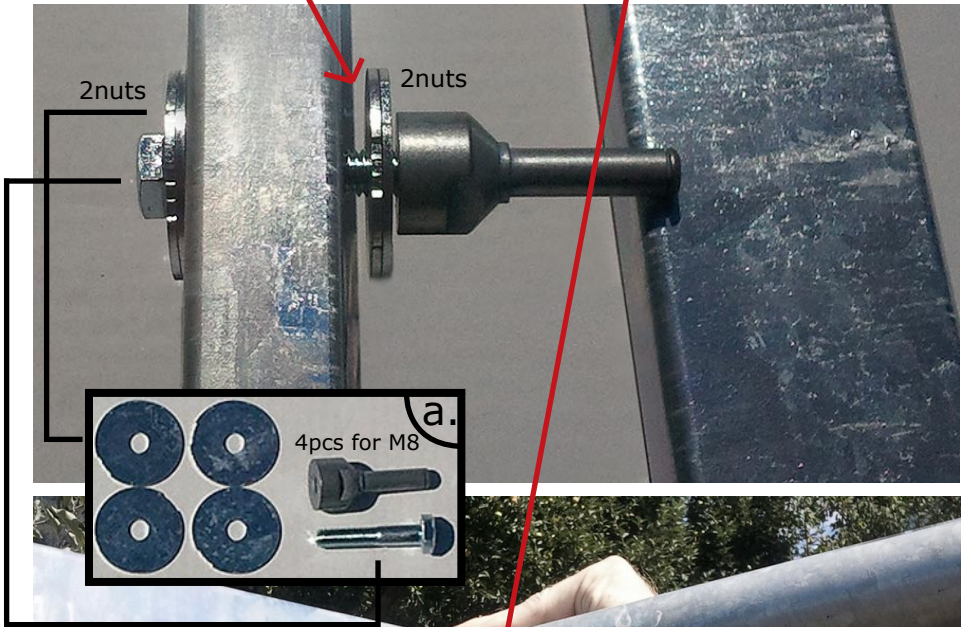
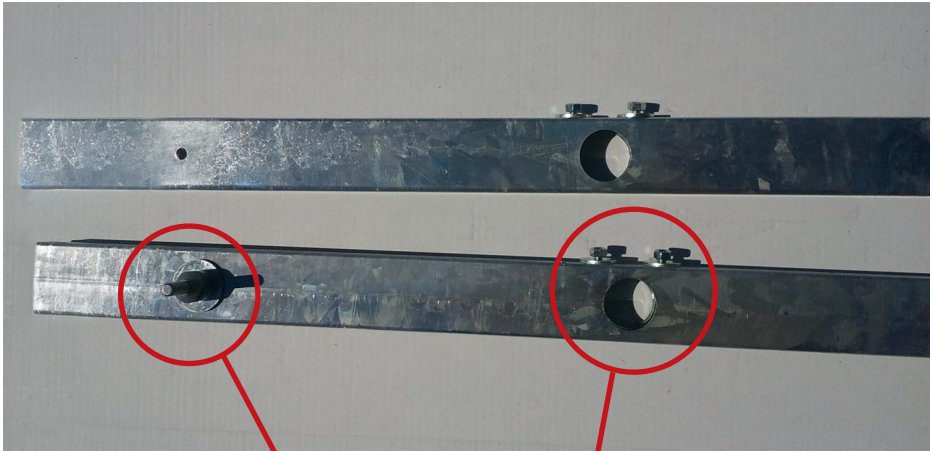
- Before you tighten screws, align vertical axis from the EAST-WEST side and the NORTH-SOUTH as shown in the figure







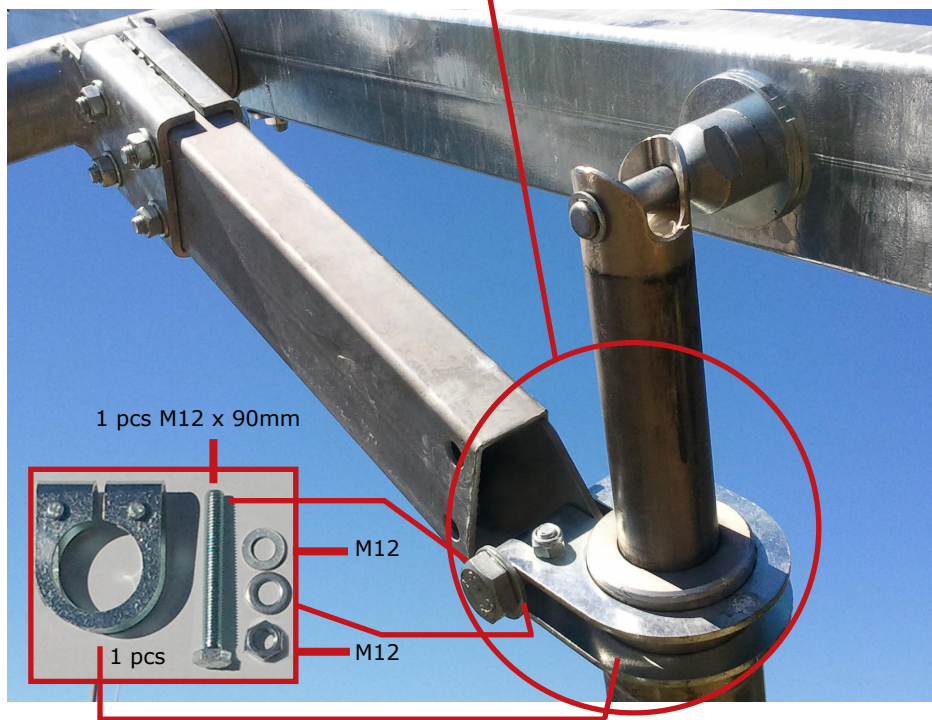
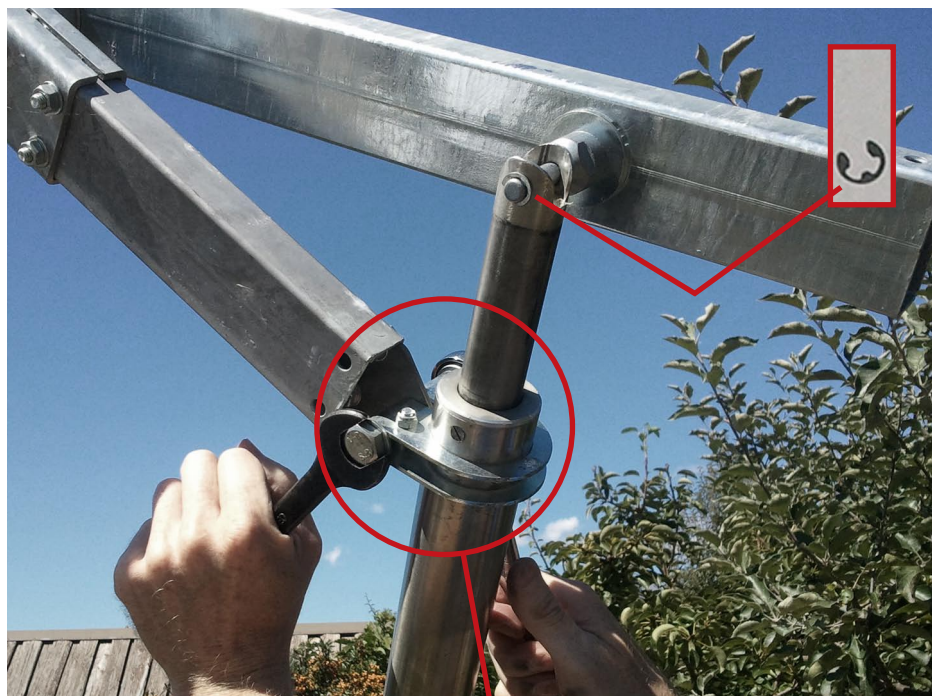


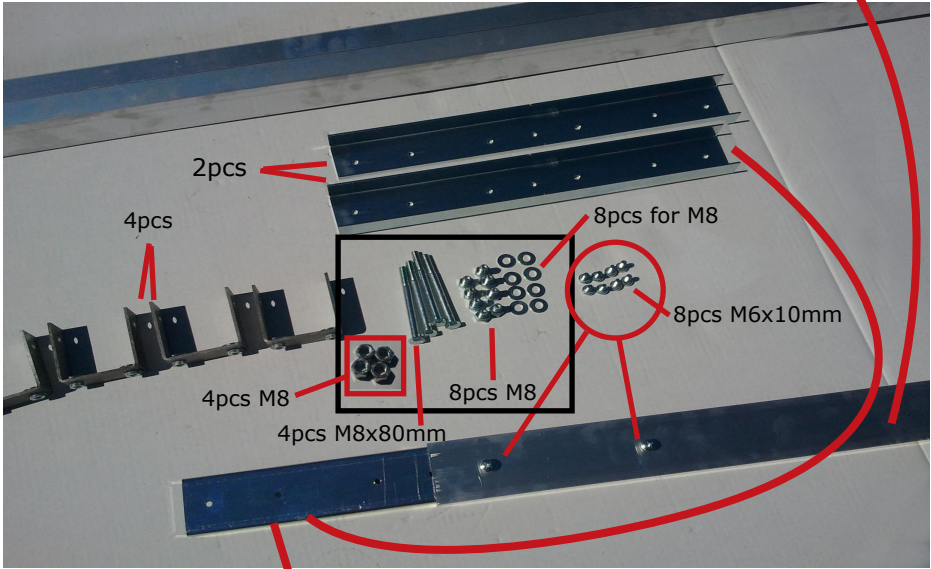
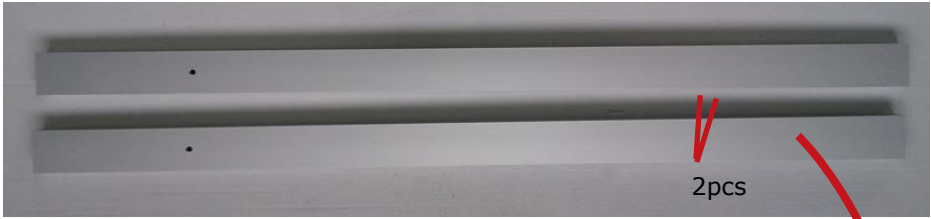


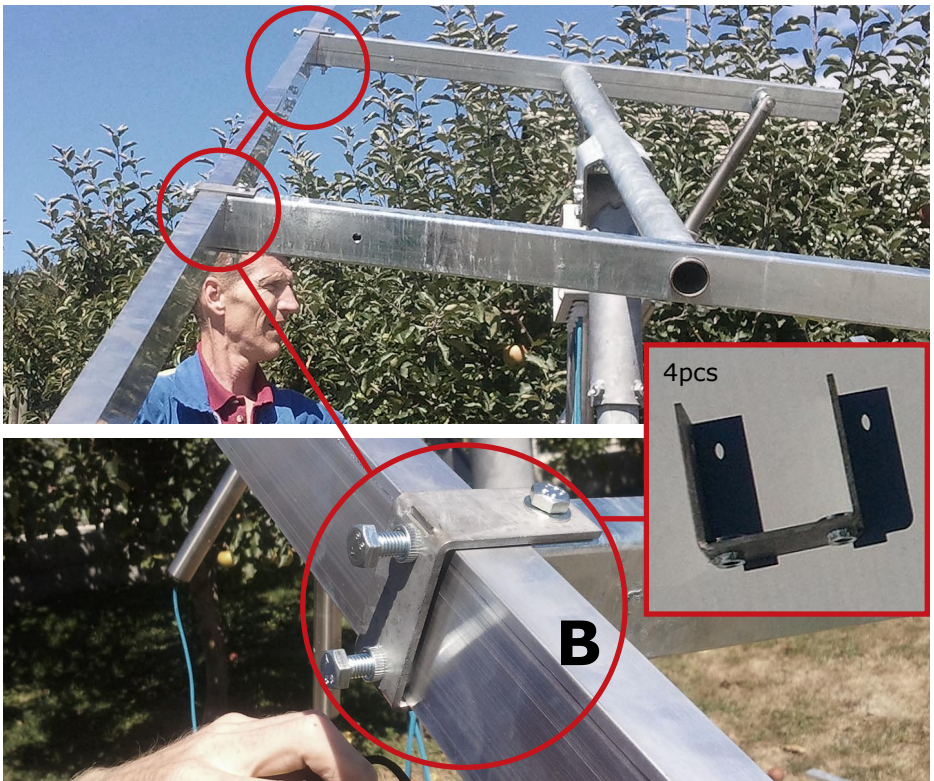
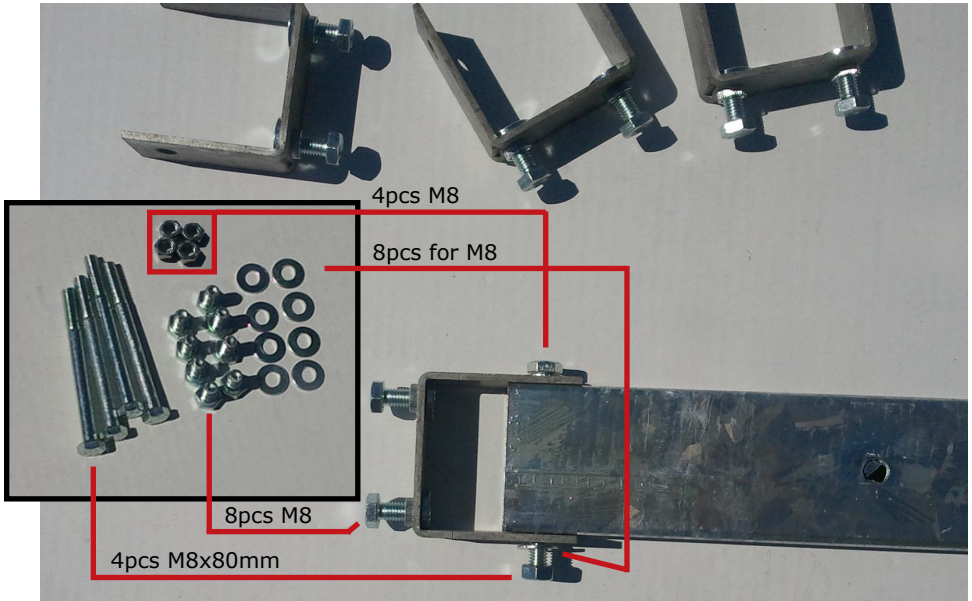


- Make sure that the two arms are perfectly parallel

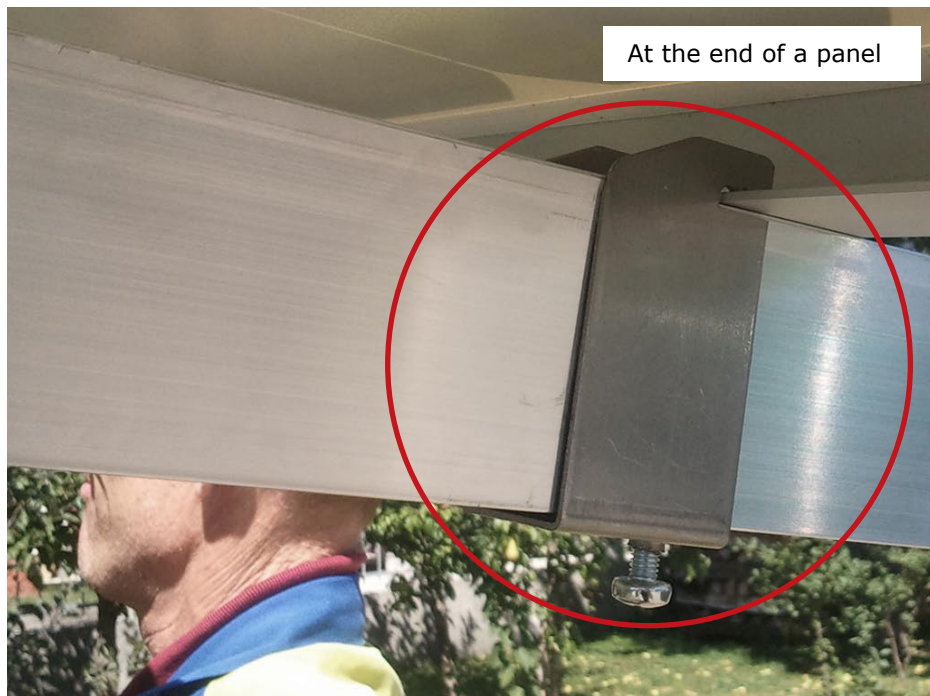
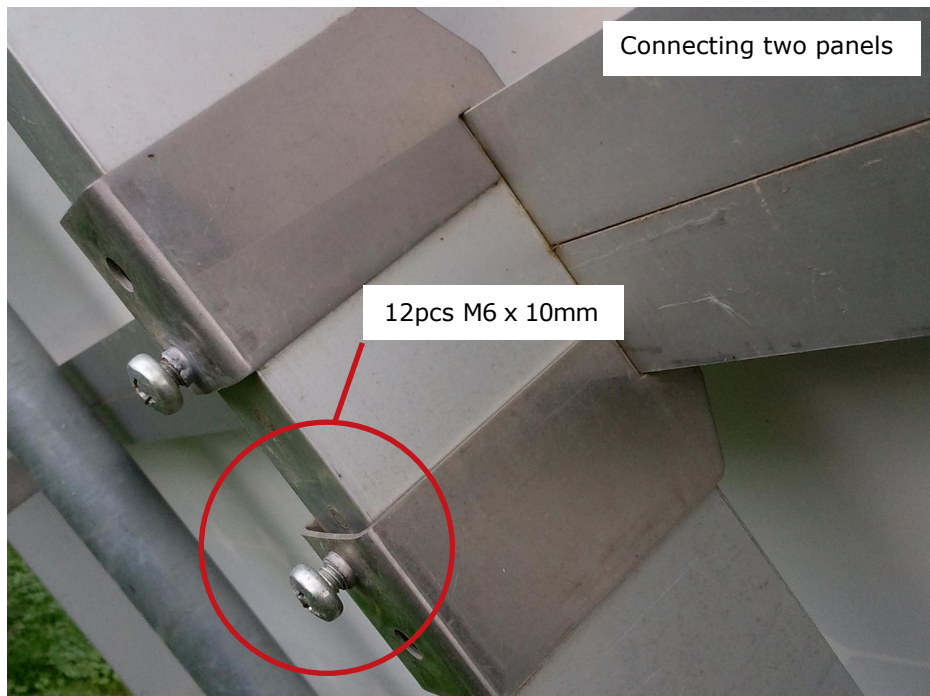














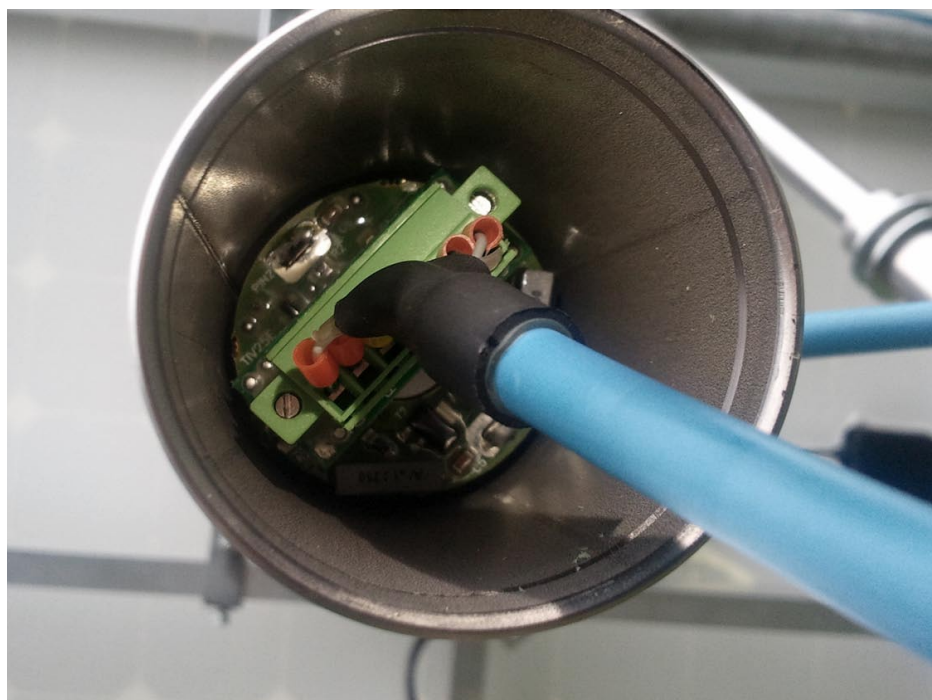


How to set the Motor Box!



2 screws are already inside the connector



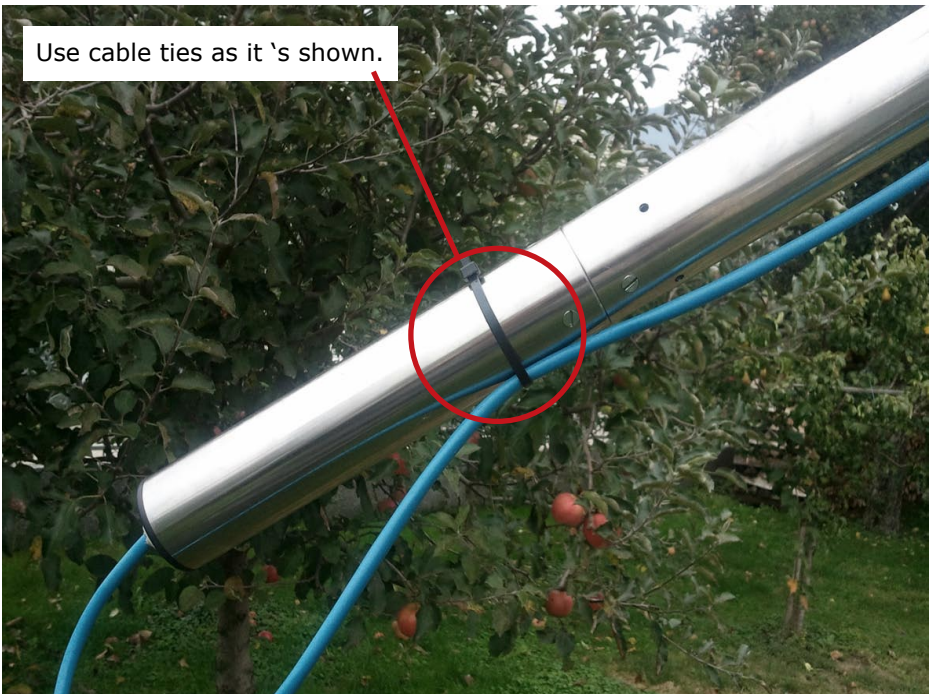


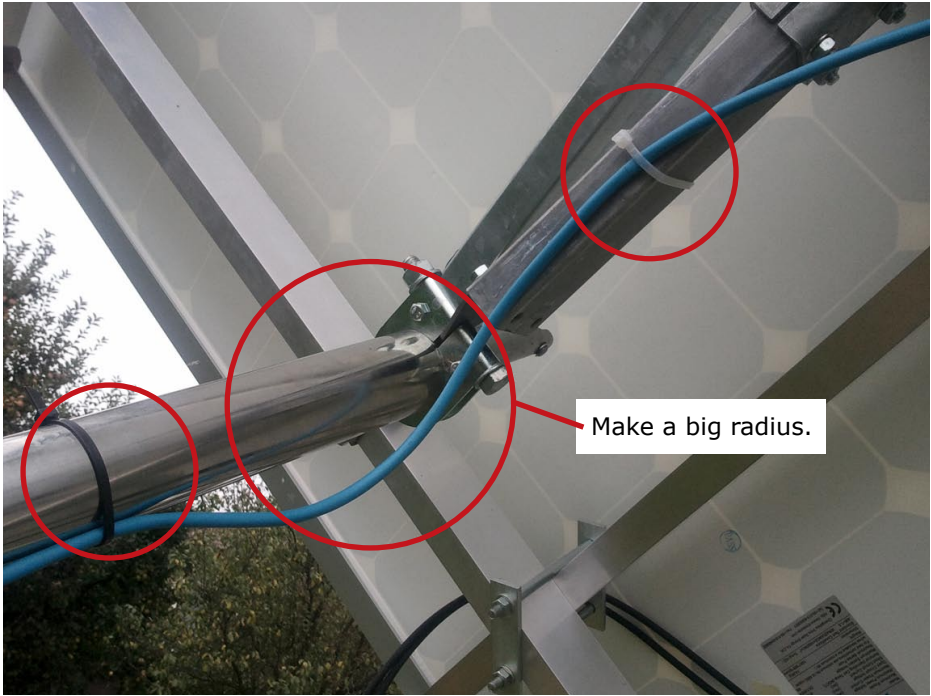
Tight screws like it's shown

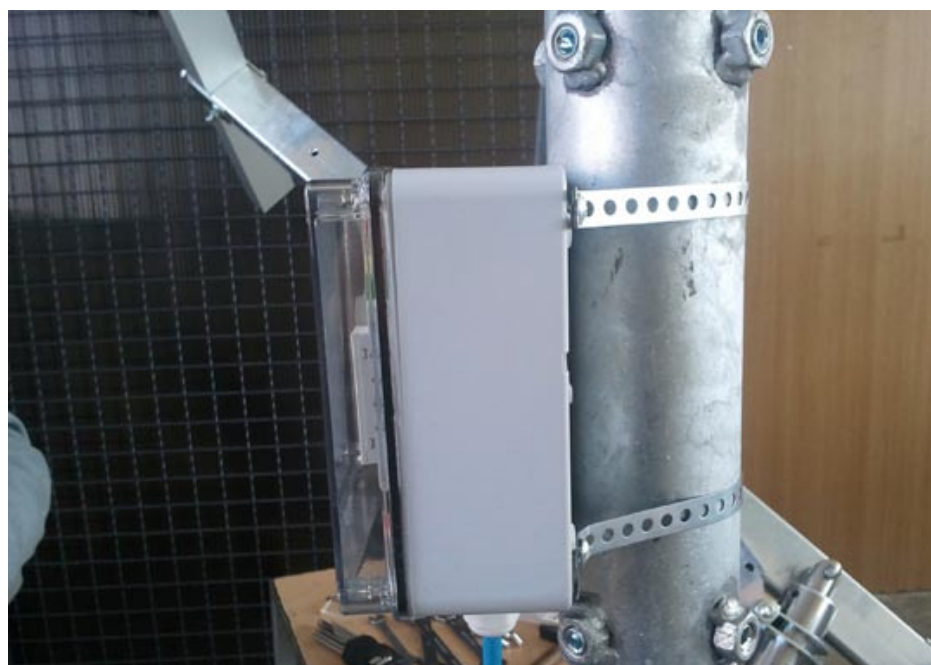




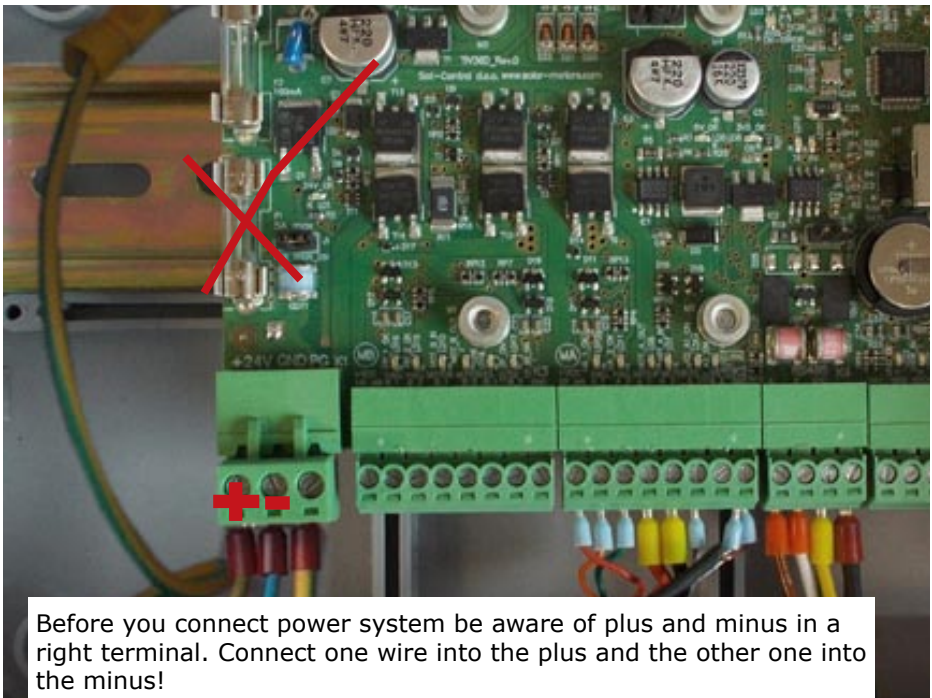
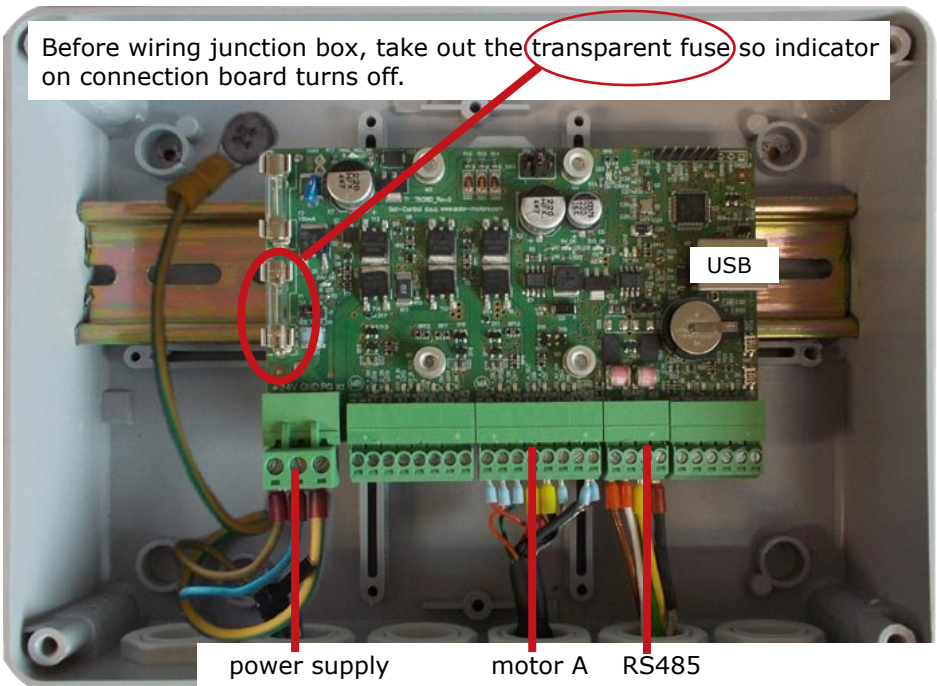
Use cable ties as it 's shown.





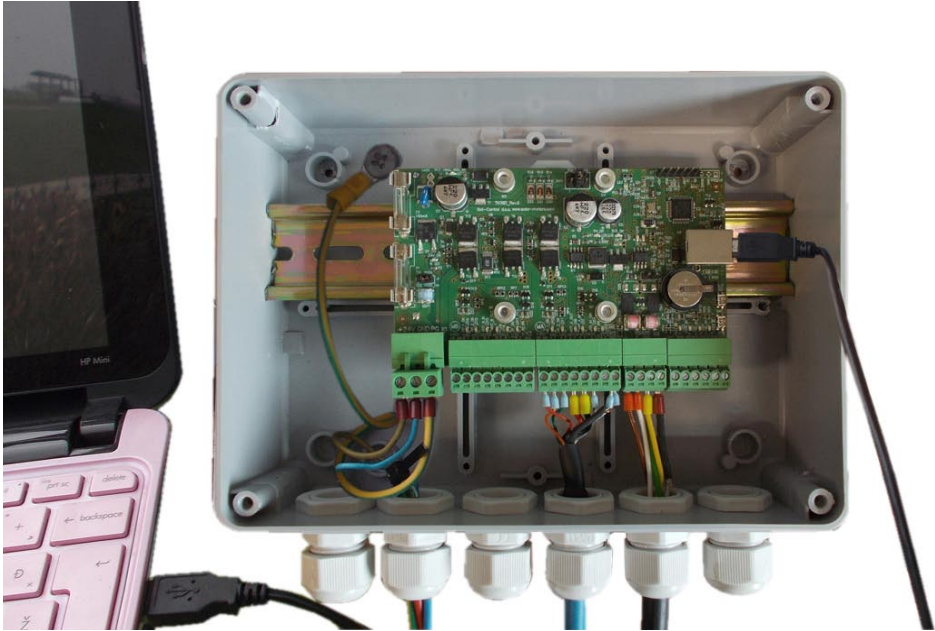


Before wiring junction box, take out the transparent fuse so indicator on connection board turns off.



FIRST CONNECTION OF TRACKER TO A PC OVER AN USB CONNECTION DRIVER INSTALLING

- Connect your PC to the tracker using the enclosed communication cable. Use the USB port on your computer.



- Computer will require its driver installation. Let windows choose your driver automatically. When the driver is not found install latest custom windows updates.

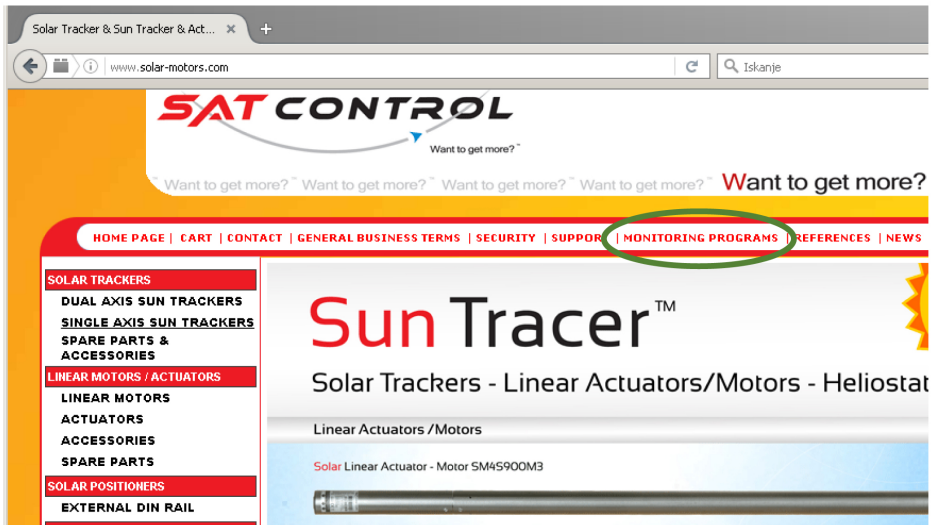


- When the next window appear, click on "No, not this time" and than **Install the software automatically** .

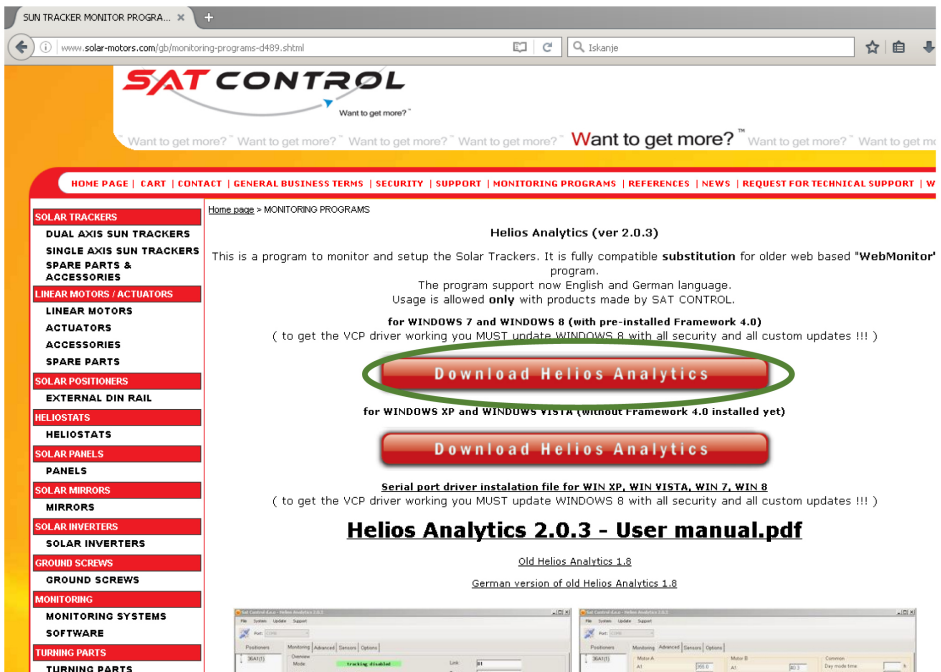
HOW TO SETUP HELIOS ANALYTICS

STEP-BY-STEP INSTRUCTIONS:

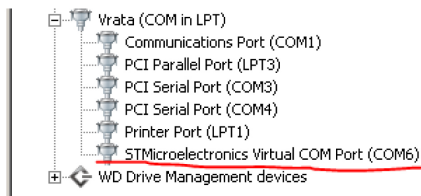
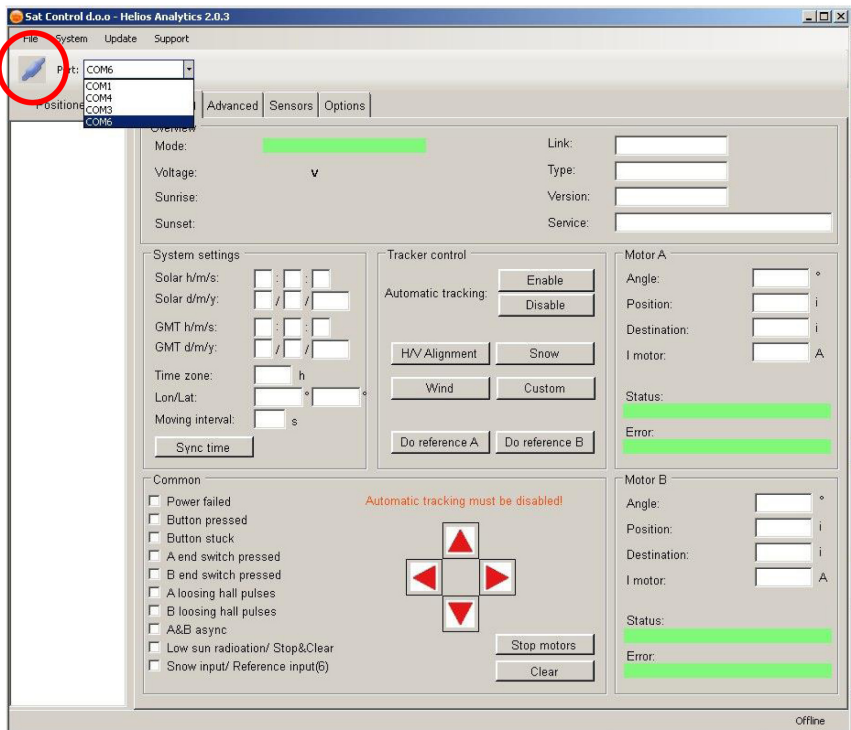
1. Download Helios analytics from www.solar-motors.com to C:\Users\USER\Downloads



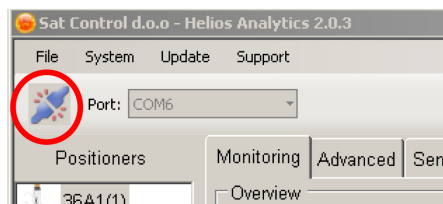
<http://www.solar-motors.com/gb/monitoring-programs-d489.shtml>



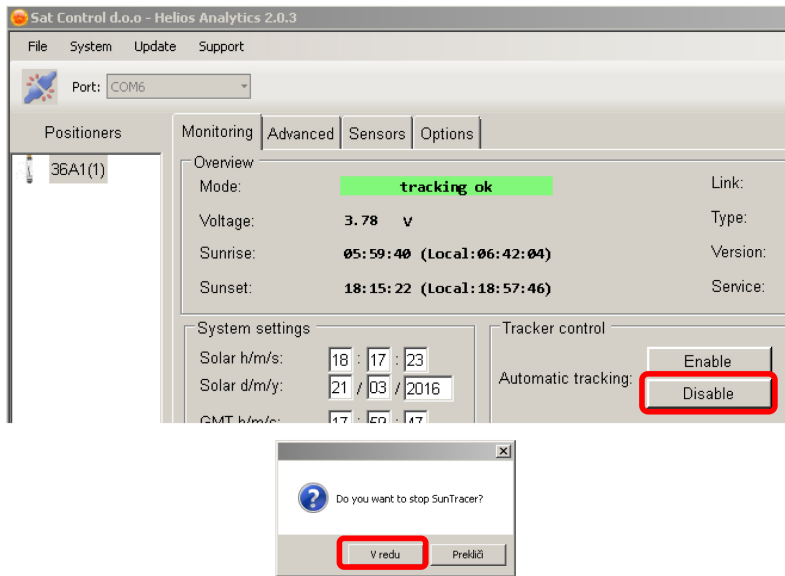
2. Extract downloaded file to disk C:\Program Files (x86)\HELIOS
3. Run or open **HeliosAnalytics.exe** from the folder where all other original files and folders are. If you want to run from desktop, make shortcut on desktop! Do not copy this file on desktop, because will not work!



4. Choose right COM port. You can check which COM port in -> START -> COMPUTER -> PROPERTIES -> DEVICE MANAGER -> PORTS COM & LPT -> check for STMicroelectronics Virtual COM port (COMx) (x is a number). In our case, we choose COM6 and press connect. (the button left beside COM ports.

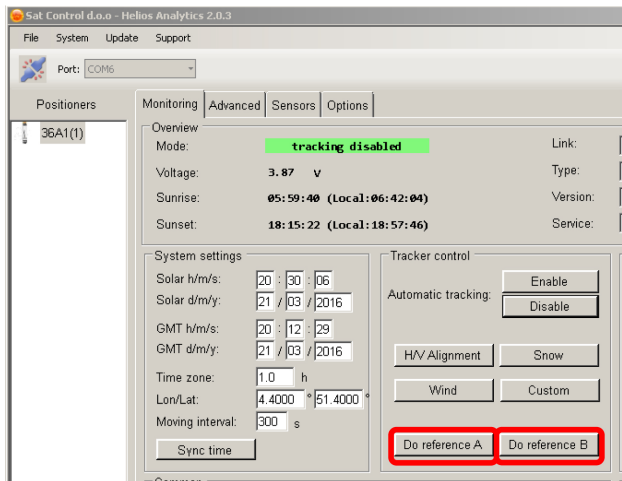


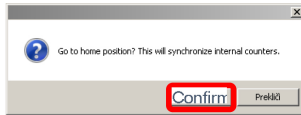
5. The numbers appear and link is counting; now disable tracking in case tracking enabled.



6. Click “Do reference A” and confirm action to initiate a position calibrating for motor A. When motor A stops, click “Do reference B” and confirm action to initiate a position calibrating for motor B

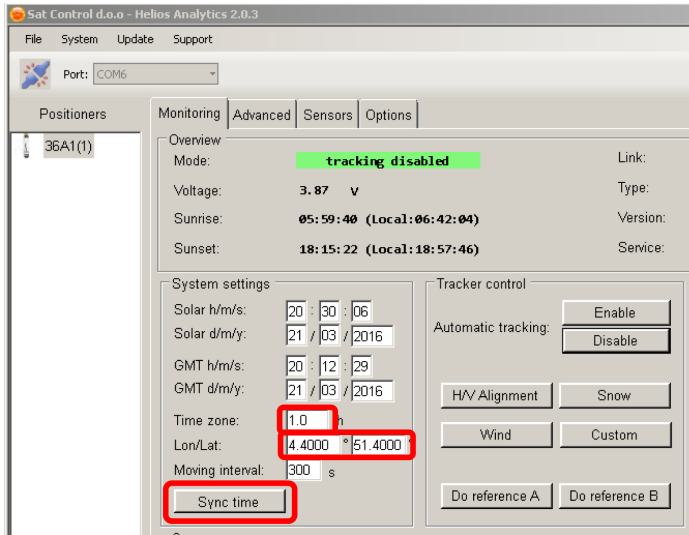
WARNING : Before proceeding to this step, make sure that all connectors are plugged in all wires and screws are properly tied in junction box and on motor’s side! If not, all further actions can lead to serious damage of tracker! The power 24VDC must be on!



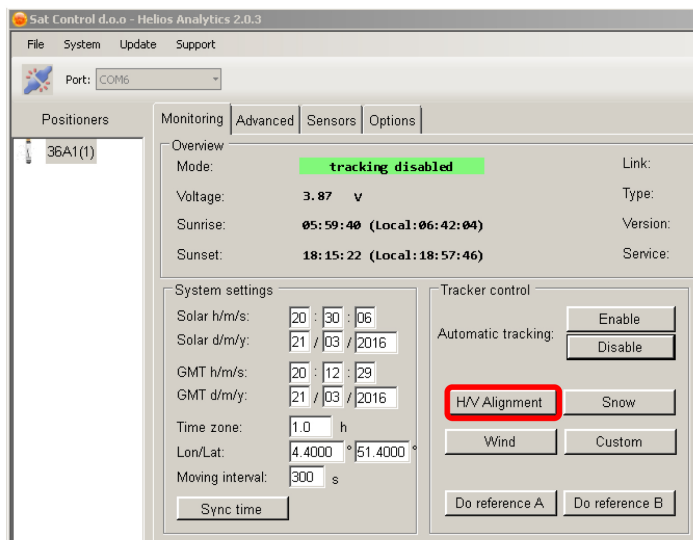


Click “Do reference A” and confirm action. When motor A stops, click “Do reference B”. You can proceed when motor stops moving and both positions are same as parameter “min range A” and “min range B” under tab Advanced parameters. Important Note: The motor fully retracts then goes to “min range A/B”. Check whether motor position is “0” (or “min range A/B” in case it is different from 0) when motor stops. In case it is not, please contact us. For additional information, refer to Helios Analytics manual.

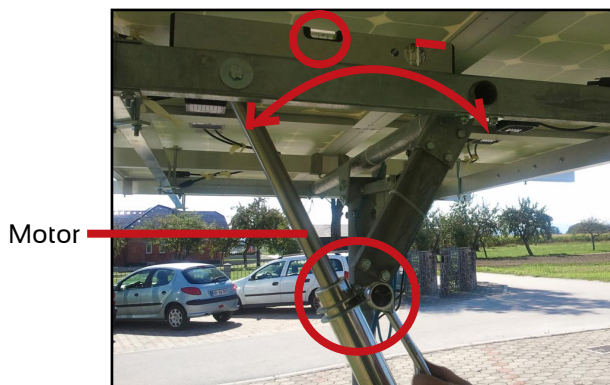
7. Sync time, set Longitude and Latitude and time zone of yours’s solar tracker position. (minus sign is WEST)



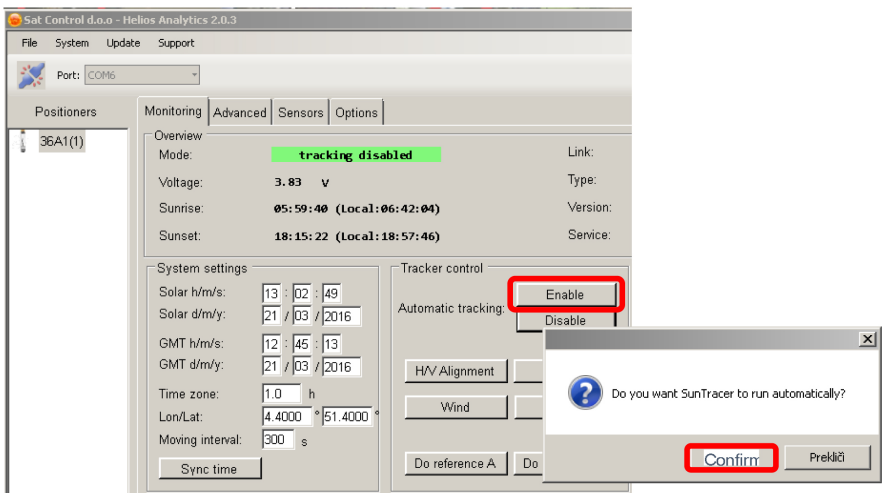
8. After the calibration is finished and motors stops, press H/V alignment to initiate horizontal alignment. After motors stops, make mechanical calibration so, that you loosen the clamp of stator part of linear motor; adjust plate with solar panels fully horizontally with help of spirit level, then tight clamp back. Do it so by both linear motors. **WARNING:** At the time of horizontal alignment, check if parameter Min. range A is zero and parameter Min. range B is zero in Advanced tab. When are not zero, then set it to zero (both).



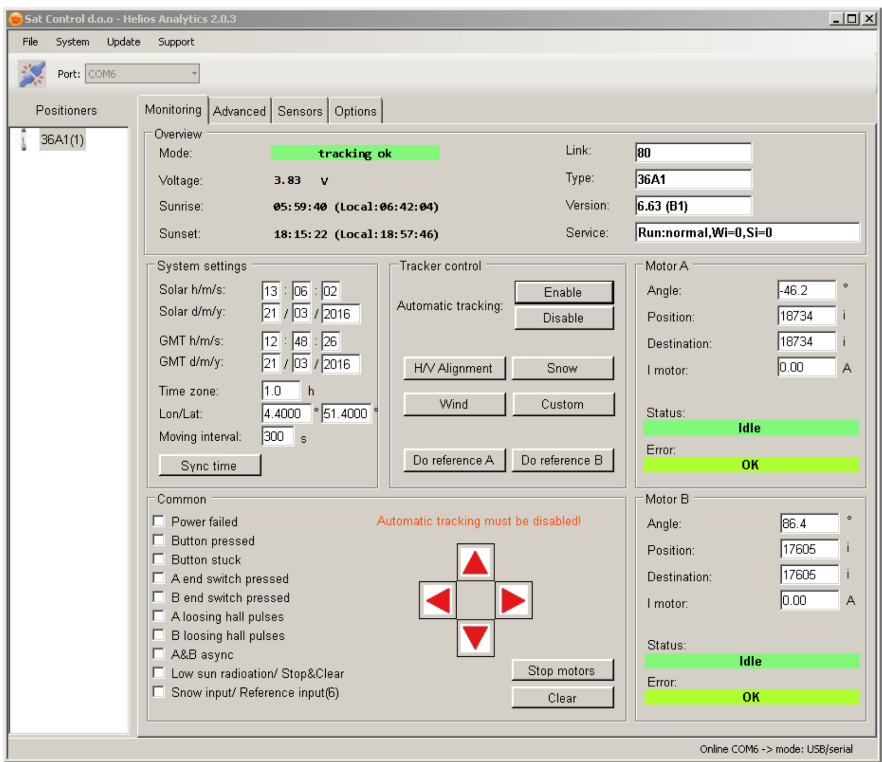
H/V alignment: Adjust motor to total horizontal position.



9. Enable tracking



Start to use the Helios analytics and discover the advantages and benefits with help of user manual for Helios analytics.



DECLARATION OF CONFORMITY
 according to ISO/IEC Guide 22 and EN 45014

Company/Manufacturer's Name: Sat Control d.o.o.

Address: Poženik 10, SI-4207 Cerklje, Slovenia / EU

declares under its sole responsibility, that the product

Product name: Solar Tracker

Model number: ST44M2V4P, ST44M2V3P, ST44M2V2P, ST40M2V3P, ST40M2V2P

Product options: (+) All

conforms to the following directives and/or standards

- EN 55013 :97 +A12 :97 +A13 :97 +A14 :00
- EN 55020 :95 +A11 :97 +A12 :00 +A13 :00 +A14 :00
- EN61000-3-3 :97
- SIST EN 61000-3-2 :97 +A1 :99 +A2 :00
- IEC 60065 :98

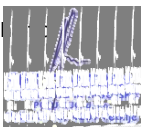
Supplementary Information:

The product herewith complies with the requirements of the following Directives and carries the CE-marking accordingly:

- the Electromagnetic compatibility (EMC) directive 89/336/EEC
- Low voltage equipment directive 73/23/EEC



Signed for and on behalf of
 Director of
 Sat Control d.o.o.
 Bogdan Bolka



Place and date of issue

Cerklje, 1st June 2010

(name, function) (signature, stamp)



Sat Control d.o.o., Poženik 10, 4207 Cerklje, SLOVENIA

Phone: +386 4 281 62 00, Fax. +386 4 281 62 13, www.solar-motors.com, info@solar-motors.com

