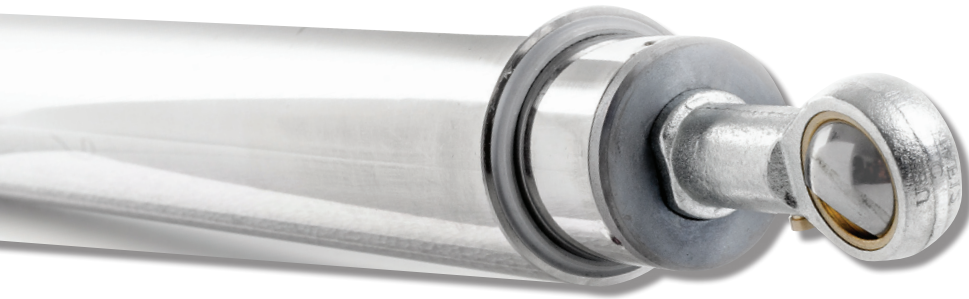


## Series SM4 M3



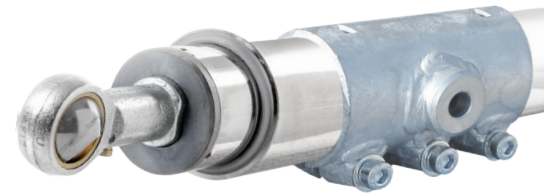
SM4S600M3NC  
Code: 0092



SM4S700M3C4  
Code: 0177



SM4S900M3C4  
Code: 0095



with C4 clamp

### Ordering information - coding explanation

SM4	S900	M3	NC
Series prefix	S - Stroke length	Motor type	Clamp type
SM4	S200 - 200 mm S300 - 300 mm S450 - 450 mm S600 - 600 mm S700 - 700 mm S800 - 800 mm S900 - 900 mm	M3 - brush DC motor M3B - brush less DC motor	NC - no clamp C4 - clamp U8 - clamp

Model	EAN	Stroke	A	B	Clamp type
SM4S200M3C4	0101	200 mm	684	763,6	C4
SM4S300M3NC	0093	300 mm	784	863,6	no clamp
SM4S450M3C4	0085	450 mm	934	1013,6	C4
SM4S500M3NC	0075	500 mm	984	1063,6	no clamp
SM4S600M3NC	0092	600 mm	1084	1163,6	no clamp
SM4S600M3C4	0178	600 mm	1084	1163,6	C4
SM4S700M3NC	0181	700 mm	1184	1263,6	no clamp
SM4S700M3C4	0177	700 mm	1184	1263,6	C4
SM4S900M3NC	0094	900 mm	1384	1463,6	no clamp
SM4S900M3C4	0095	900 mm	1384	1463,6	C4

#### Mechanical Capabilities

Construction material of linear motor	Stainless steel tubes and spindle and high carbon steel
Spindle type and material	ACME stainless spindle
Stroke length**	SM4S600M3NC 600 mm SM4S700M3NC 700 mm SM4S900M3C4 900 mm
Max. static load	1500 kgf
Dynamic load capacity	800 kgf
Rod end type	Spherical bearing with hole dia. 12 mm with pivot angle of 13°
Speed at no load	2,33 mm/s
Resolution	188 pulses/mm
Backlash	max. 0,15 mm

#### Electrical Data

Motor power supply	24VDC +/- 15% 4A (5A current capability) (In rush 300% on max. current or softstart)*
Power consumption in operation	Rated 36W, max. 100W at 20% duty cycle
Power supply connection	1 piece of 2 Wire Cable with an Internal Cu Conductor of 1,5 mm <sup>2</sup> (not included in kit)

#### Environmental Data

Operating temperature	-25°C to +85°C (optionally with arctic grease for temperatures from -40°C up to +85°C)
Operation at humidity	0% to 100%, relative humidity
Corrosion Protection, weather and chemical resistance	PLASOX® plasmanitriding with subsequent oxidation

#### Packaging

Dimensions of a packed product	1 box of 1600 (L) x 80 (W) x 80 (H) mm
Product weight neto	SM4S600M3NC 8,5 kg SM4S700M3NC 8,5 kg SM4S900M3C4 8,5 kg

#### Quality Certificates

International Protection Rating (IEC 60529)	IP63
Electromagnetic Compatibility (EMC Directive 89/336/EEC)	Yes
Low Voltage Equipment Directive (EEC Council Directive 73/23/EEC)	Yes

#### Optional Properties

Guarantee time	2 years as standard, 5 years for +20% *** 10 years for +35% ***
----------------	---

\* NOTE: Lifetime of the brush in the motor is 30% shorter if motors don't have soft start and stop.

\*\* NOTE: Other dimensions optionally

\*\*\* NOTE: For additional payment

SunTracer is registered trademark® of company Sat Control®. All rights reserved. Copyright.



