



### Product Description

#### Specifications:

- Optical sensor for fine tuning of Solar Tracker for concentrator applications
- Precision better than  $0.1^\circ$



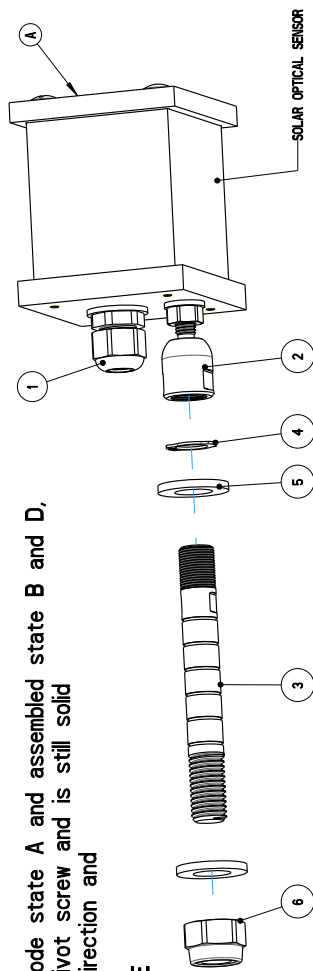
Made in Europe

## INSTRUCTIONS FOR INSTALATION

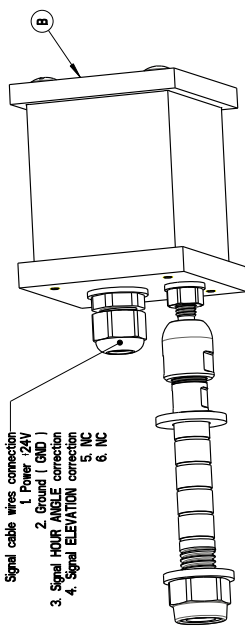
Follow the steps and assemble and set as is written below:

1. Assemble the sensor throw the hole dia 14 mm on construction as is shown in explode state A and assembled state B and D, and do not tight much the nut with pivot angle 2, so you can turn around pivot screw and is still solid
2. Align sensor to the panels or to construction so that is parallel with hour angle direction and
3. Align top surface normal to solar panels top surface as is shown in view D and E
4. Connect the cable into a junction box in distribution panel where is written HOUR angle input and ELEVATION angle input.
5. Do not forget to connect the power as well +24VDC and - GND

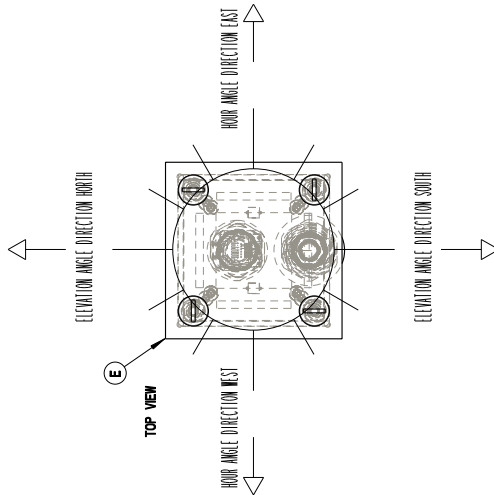
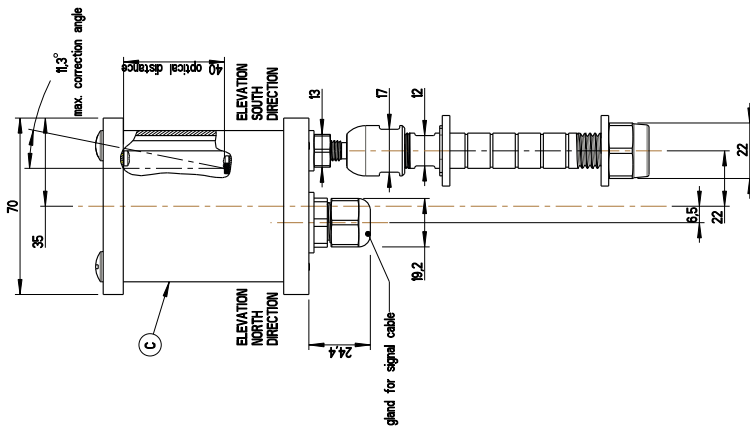
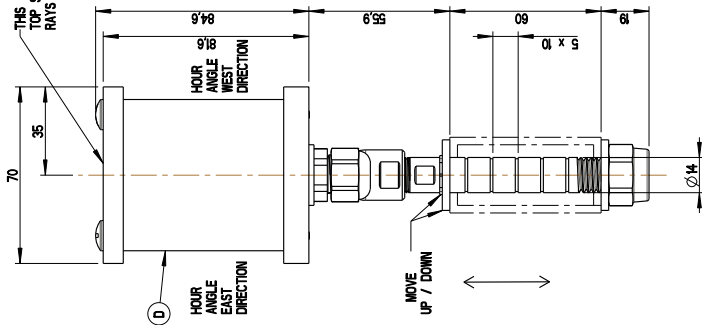
Connect the USB port, run Helios analytics and set the parameters for solar optical sensor. The values for optical sensor are published in Helios analytics user manual.



- Signal cable wires connection:
1. Power +24V
  2. Ground (GND)
  3. Signal HOUR ANGLE correction
  4. Signal ELEVATION correction
  5. NC
  6. NC



THIS SURFACE NEED TO BE PARALLEL WITH TOP SURFACE OF SOLAR PANELS SO THAT SUN RAYS FALL NORMAL TO THIS SURFACE



No.	Code	Description
6	DN620M4	Nut self-lock M4 DN622 Fe/Zn 12um
5	DN625-M4	Washer DN625A M4
4	DN47B-D4	Retaining ring DN47C dia. 12
3	3C300397399	Friction screw M4 for SOS0C1
2	3C300397399	Bearing nut with pivot angle by SOS0C1
1	3C300398046	Gland P6-9 set w opposite nut

A-Z: Qty:	Code:	Description:
	P97	ISO 2769 M
	M17	ISO 2769 M
	0089-A	Open roughness: Treatment & Remarks: 0089-A
	SOS0C1	Open roughness: Treatment & Remarks: 0089-A
	Code +2:	0.500 593.335.0
	No. of drawing:	Scale:
	Mass:	

Position:	Quantity:	Material:	Size:	Open roughness:	Treatment & Remarks:	Price & Date:
Bolka B.	1	Bolka B.	3C300390089	SOS0C1	0089-A	593.335.0
Checked by:	Approved by:	EAN code / standard:	Code +2:	No. of drawing:	Scale:	Mass:

0089 Assembly of alumina box, glass and electronic board, g114x170  
 Description: Solar optical sensor SOS0C1 w precision 0.1°  
 SAT CONTROL  
 Set Control d.o.o. Priznik 10, S-4207 CERKLJE - SLOVENIA (EU)  
 Copyright Sat Control d.o.o. Confidential I